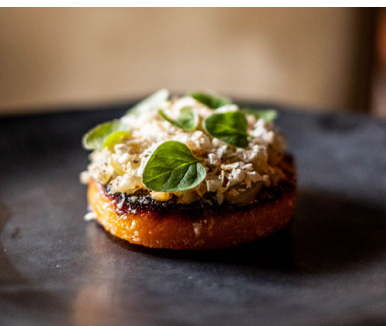




# BLACKBERRY FARM

Situated on a pastoral 4,200-acre estate in the Great Smoky Mountains, Blackberry Farm will show you the many reasons why it is one of the top-rated properties in the world. Blackberry Farm's renowned Foothills Cuisine is inspired by what comes from the Farm and the surrounding region. Opportunities on the Farm include cycling, music events, inspired wine and food events with award-winning chefs, fly fishing, garden experiences, spa treatments and more.

- Within a cove, elevation 1,100 feet
- 4,200 acres, 2,100 acres in conservation
- More than 9 miles of hiking trails
- Ideal for: epicurean adventures, family gatherings, romantic getaways
- Home to a working farm and renowned culinary program
- Dining/restaurants: The Main House dining room, The Dogwood, The Barn
- Refined, farm-fresh, seasonal cuisine
- James Beard Award-winning wine and dining at The Barn at Blackberry Farm®
- Adventure activities: cycling, horseback riding, hiking, boating, water and paddle sports, fly-fishing, bird-watching, sporting clays, carriage rides, archery
- Wellness rooted in an appreciation of natural balance at The Wellhouse at Blackberry Farm (spa)
- Heritage garden and seed preservation program



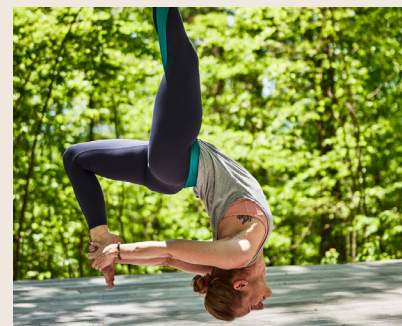
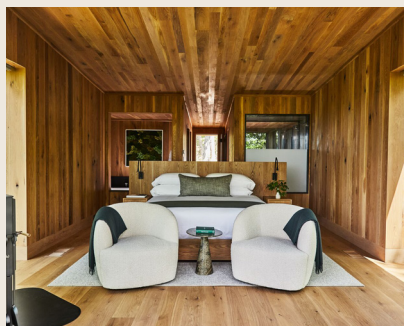
[BLACKBERRYFARM.COM](http://BLACKBERRYFARM.COM)

1.800.557.8864 | [RESERVATIONS@BLACKBERRYFARM.COM](mailto:RESERVATIONS@BLACKBERRYFARM.COM)



Spanning 5,200 acres in the Great Smoky Mountains, Blackberry Mountain continues a legacy of world-renowned hospitality and unwavering dedication and appreciation for the land. Rising above Miller's Cove in Walland, TN, Blackberry Mountain has dedicated 2,800 acres of land to conservation. This effort to preserve the natural wonder of the mountains offers breathtaking views and a serene escape from the stresses of modern life in a private national park setting. Outfitted for adventure and designed for comfort, this estate takes the Blackberry State of Mind to new heights.

- Nestled into the mountains, top elevation 2,843 feet
- 36+ miles of hiking and biking trails
- Incredible expansive views of the Great Smoky Mountains
- Ideal for: exhilarating outdoor adventures, memorable family trips, nature retreats, relaxing and recharging escapes, romantic getaways
- Dining/Restaurants: Three Sisters, Sycamore and Firetower all with an approach to cuisine focused on creative and wholesome ingredients.
- Adventures for every level of fitness, ambition and imagination
- Adventure activities: Expansive hiking and biking trails, Arbor Adventure ropes course, group fitness classes, indoor rock climbing, fly fishing, various art classes, water and paddle sports
- Curated wellness experiences honoring the wellbeing of body, mind and spirit with nature and art. Home to Nest. (spa) with a treatment menu of natural therapies tailored to the needs of each individual.



[BLACKBERRYMOUNTAIN.COM](https://blackberrymountain.com)

1.800.993.7824 | [RESERVATIONS-BMTN@BLACKBERRYMOUNTAIN.COM](mailto:RESERVATIONS-BMTN@BLACKBERRYMOUNTAIN.COM)